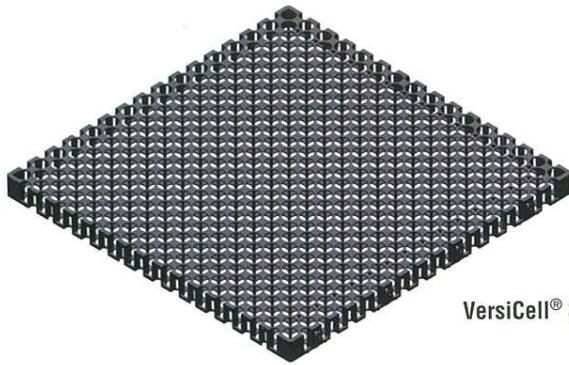


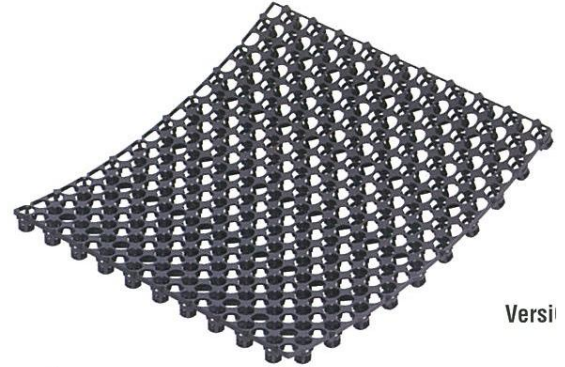
VersiCell®

構造排水モジュール

VersiCell® is designed for sub-surface drainage as well as providing waterproofing membrane protection and heat & insulation. VersiCell® eliminates the use of heavy gravel aggregates for sub-surface drainage and screeds for waterproofing membrane protection in planter boxes and roof gardens and is applied also on retaining walls to relieve hydrostatic pressure.



VersiCell® 3050



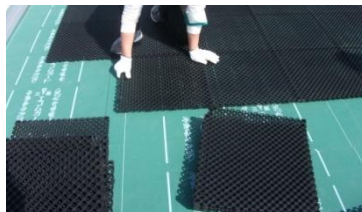
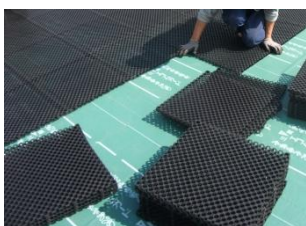
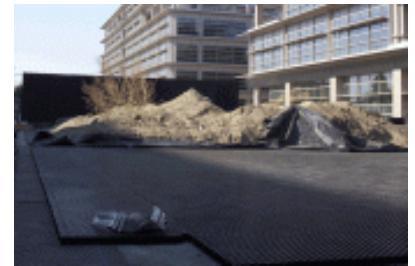
Versi

- 耐圧強度 80t/m² (2050) *
- 60t/m² (3150) *
- 重量 2.0kg/m² (2050)
- 2.2kg/m² (3150)
- 1%勾配での排水能
- 13L/m.s (2050) *
- 16L/m.s (3150) *
- サイズ 500x500x20mm (2050)
- 500x500x30 (3150)

* 代表値で保証値ではありません

耐薬品性に優れている。

用途: 屋上緑化排水材・菜園用基盤排水材
擁壁排水材・競技場中排水材・濾過システム
特殊緑化基盤材 等



都内 薄層緑化屋上 排水層取付

都内 薄層緑化屋上 メンテ通路下地

Ings Roofscape(屋上綠化)

Elmich Landscape Roof have a wide range of applications in the landscape, building and construction industries and they benefit both the buildings on which they are installed and the urban environment.



A landscape roof is a traditional green park built on a concrete roof, accessible to people and can be designed with various amenities and leisure facilities. A typical landscape roof consists of vegetation ranging from lawns, flowering plants, shrubs to small trees planted in moderate to heavy media, a drainage layer and waterproofing membranes laid on the roof surface.

A landscape roof is an attractive, functional and environmentally friendly alternative to impermeable traditional roofs. It increases amenity space for building owners, reduces storm water runoff, mitigates impact of air pollution, provides sound insulation and shields both the waterproofing membrane and the roof surface from the harmful effects of daily sunlight and UV exposure. A landscape roof also contributes to energy efficiency through improvement of the thermal performance of buildings and reduction of Urban Heat Island Effect.

